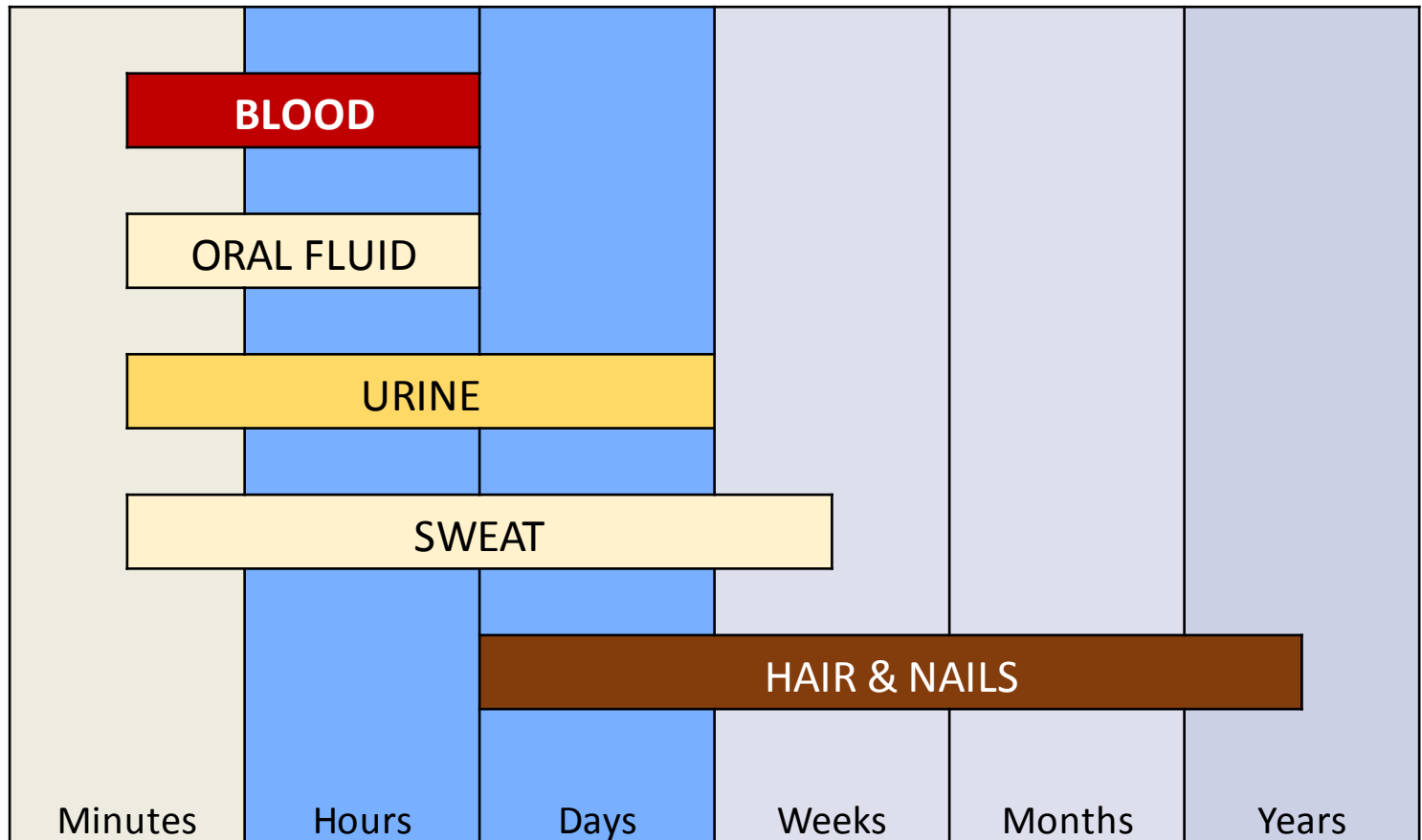
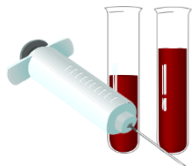




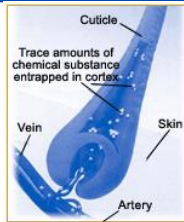
ST VINCENT'S  
HEALTH AUSTRALIA

# Drug testing in treatment

# Which matrix for testing?



# Which matrix?



MATRIX

HAIR

BLOOD

URINE

Collection

Non-invasive  
Easy to transport  
Easy to collect  
Expensive

Invasive  
Biohazard  
Refrigeration

Non-invasive  
Transport issues  
Refrigeration  
Adulteration

Detection  
Window

> 3 days to 6 months

1 – 2 days

2 hours to a week

# The Five-Panel Drug Test

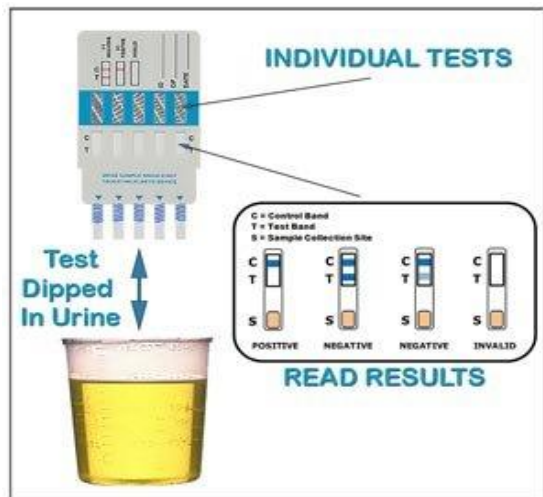
Drug Classification	Window of Detection
Amphetamines and Methamphetamines	1-2 days
Benzodiazepines	3-5 days
Cocaine	2-4 days
Opiates	1-3 days
Oxycodone	1-3 days

# Urine drug screening

Easy to collect

Non-invasive

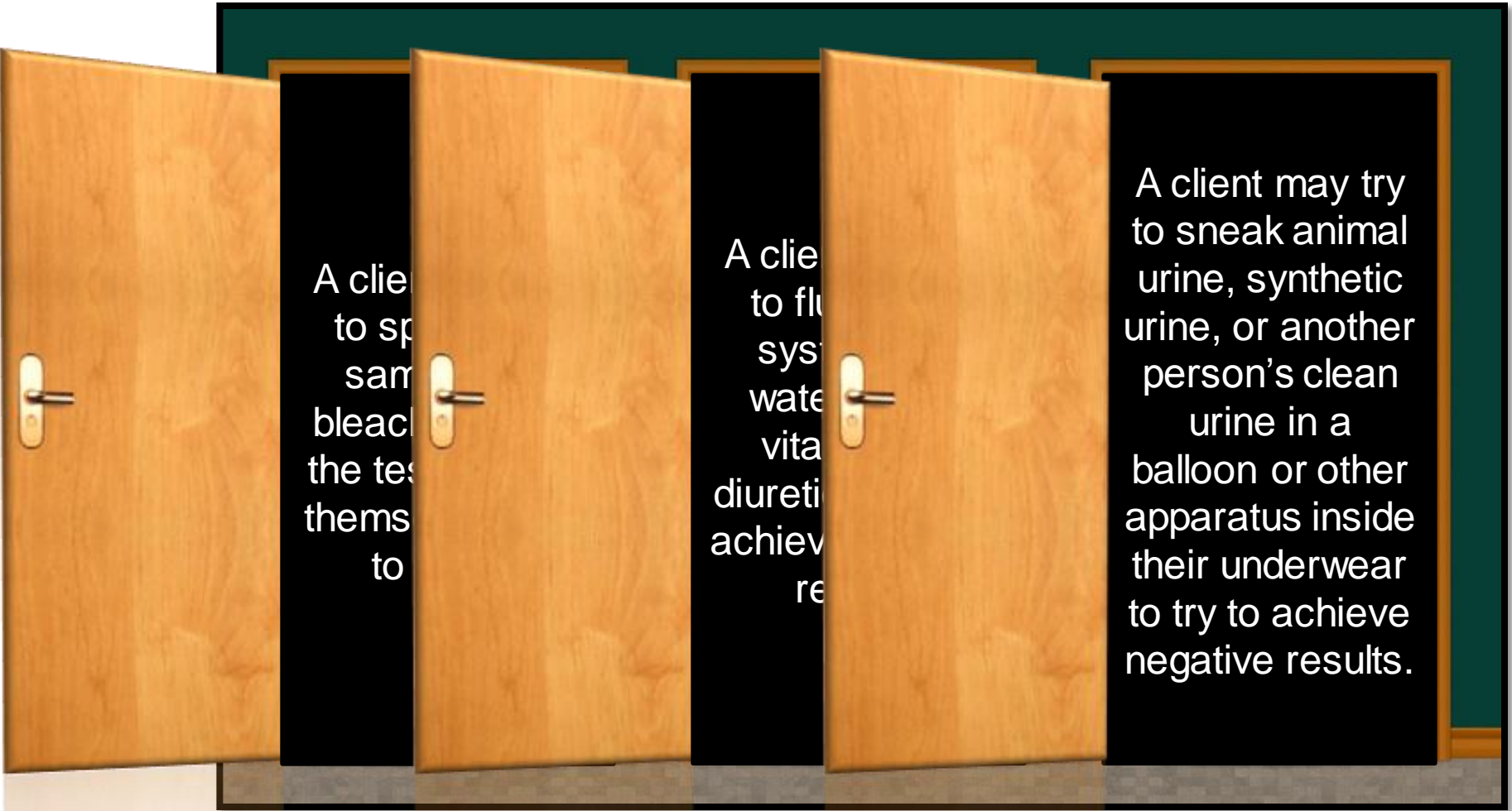
Cheap to analyse



## Australian Standard

Drug	AS 4308 2008 Urine
Amphetamines	300 mg/L
Benzodiazepines	200 mg/L
Cannabis	50 mg/L
Cocaine	300 mg/L
Opiates	300 mg/L

# What's behind the door?



A client  
to sp  
sam  
bleac  
the tes  
themse  
to

A client  
to fl  
sys  
wate  
vita  
diuret  
achiev  
re

A client may try  
to sneak animal  
urine, synthetic  
urine, or another  
person's clean  
urine in a  
balloon or other  
apparatus inside  
their underwear  
to try to achieve  
negative results.

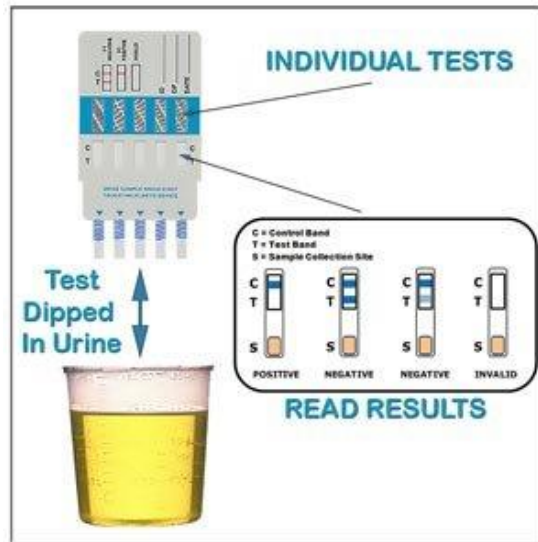
# Urine drug screen

Easy to collect

Non-invasive

Cheap to analyse

Cheating is an industry ...



**PASS ANY URINE TEST**

- Can Not Be Detected
- Instantly Clean
- With Drug Test

**INTERNATIONAL #1 BEST SELLER**



**LEARN MORE**

# Devices and artificial urine





## Efficient and effective testing?

Periodic, randomized drug testing may be appropriate if:

Positive Negative Negative Negative

- You are concerned about compliance or safety
- For safety
- Medicare allows 36 tests in 12 months as part of rehabilitation

How frequently do I really need to test this client for drugs?

For how long do I really need to test this client for drugs?

# Discussion time

---

